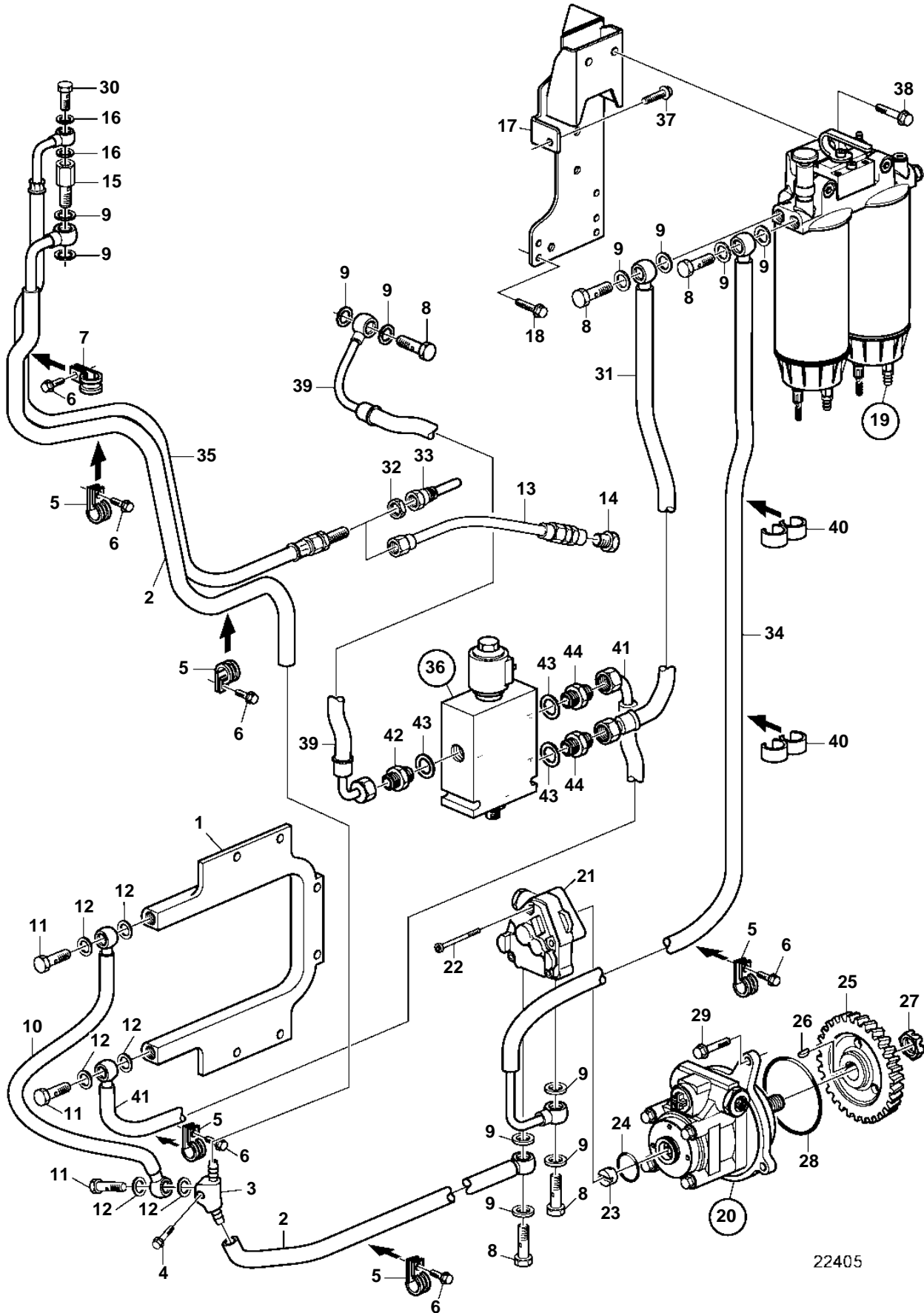


D9A2A D9A-MH, D9A2B MH



22405

D9A2A D9A-MH, D9A2B MH

REF	PART NO.	QTY	DESCRIPTION	SEE SEC.	NOTES
1	20562394	1	Radiator		
2	3883149	1	Fuel hose		
3		1	· Connector		
4	947760	1	Flange screw		
5	949747	8	Clamp		
6	946440	7	Flange screw		
7	978869	1	Clamp		
8	941686	5	Hollow screw		
9	982724	12	Gasket		
10	3883148	1	Fuel hose		
11	25167	3	Hollow screw		
12	982723	6	Gasket		
13	3826595	1	Fuel hose		
14	943582	2	Plug		
15	20450468	1	Overflow valve		
16	982721	2	Gasket		
17	3840366	1	Bracket		
18	965186	2	Flange screw		
19	3842872	1	Fuel filter housing, assy.		
				8972	
20	20902690	1	Tandem pump		With servo pump., 16L/min, (20453450)
	20453452	1	Tandem pump		With servo pump., 25L/min
21	3594874	1	Fuel pump		Without servo pump., (3837998)
	20997341	1	· Fuel pump		(85103778)
22	85103780	3	· · Hex. socket screw		
23	85103779	1	· · Constant velocity jo		
24	85103703	1	· · O-ring		
25	8148198	1	· Gear		
26	1505357	1	· Wedge		
27	20367040	1	· Castle nut		
28	977030	1	O-ring		
29	975199	3	Flange screw		
30	48634	1	Hollow screw		
31	3883155	1	Fuel hose		
32	957018	1	Hexagon nut		
33	3829292	1	Nipple		
34	3883152	1	Fuel hose		
35	3889777	1	Air vent pipe		
36		1	Shut-off valve		
				8446	
37	965180	1	Flange screw		
38		2	Screw	8972	
39	3883154	1	Fuel hose		
40	9205207	2	Retainer		
41	3883153	1	Fuel hose		
42	983388	1	Nipple		
43	947629	3	Gasket		
44		2	Nipple	8446	